



PERFORMANCE BEYOND LIMITS

ENGINE DATA

3W-56I B2 HFE FI





ENGINE DATA 3W-56I B2 HFE FI



SPECIFICATIONS

Cylinder Capacity	56.0 ccm/3.42 cu in
Power	5.3 HP/3.9 KW
Torque	4.5 Nm/5600 RPM
Bore Diameter	1.42 inch (36 mm)
Stroke	1.1 inch (28 mm)
Speed Range	1500-8500 RPM
Weight	5.73 lbs (2.6 kg), incl. ignition
Crankshaft	3 ball bearing
Oil/Gasoline Ratio	1:50/2% mix
Operating voltage	13-28 V DC
Tested Heavy Fuel	JETA-I, JP-5, JP-8 Mix ration: 2 % Aspen Oil 0,1 % Diesel Valve Cleaner

ENGINE TYPE / SETUP

Direction	counter clockwise
Muffler	3W S/30
Fuel	Jet-A1
Date	16.07.2012
Running time before test	5 hours
Header length	22 cm
Throttle position	WOT
Propeller	misc.

Engine data based on test run according to:

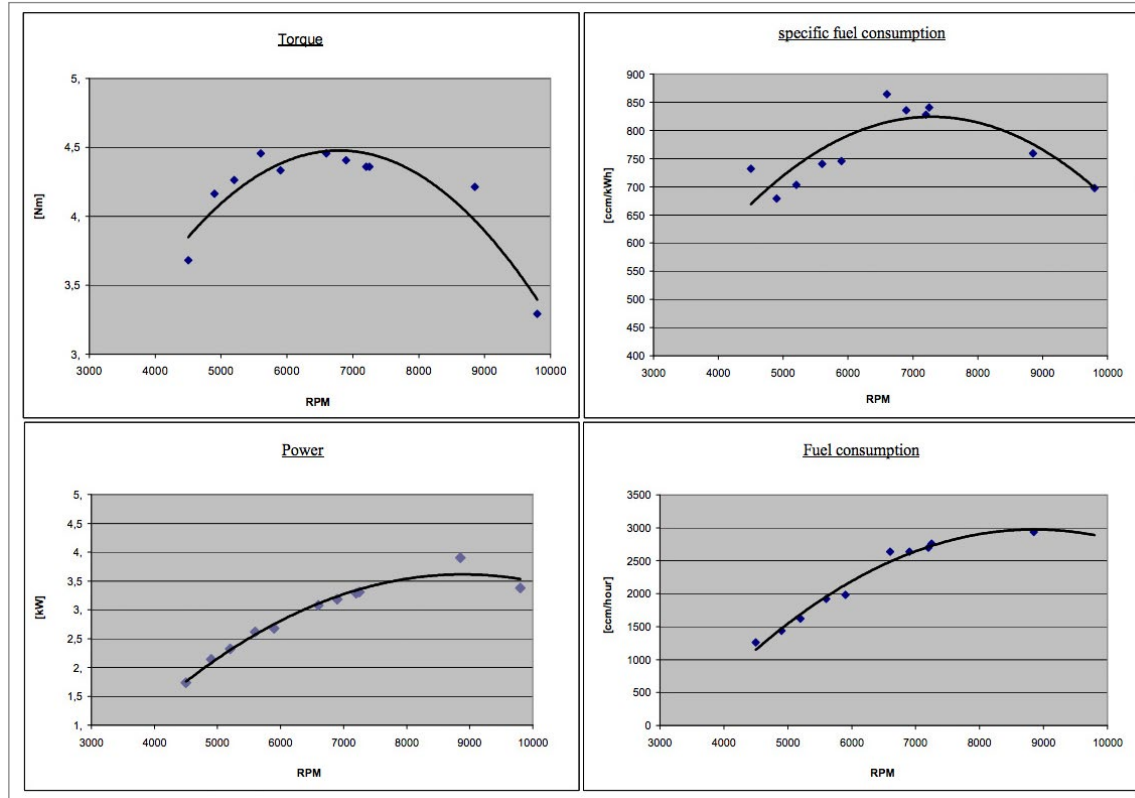
Air pressure (mbar)	1010
Ambient temp. (°C)	21
Humidity (%)	49

ENGINE PARAMETERS

Propeller					n red	Md red	N red	N red	FC	FC	SFC
Diameter	Pitch	Blades	Vendor	RPM	RPM	[Nm]	[kW]	[PS]	ccm/min	ccm/h	ccm/kWh
23	13	3	cfk	4500	4512	3.68	1.73	2.36	21	1260	732
26	3D	2	jxf	4900	4913	4.17	2.14	2.91	24	1440	679
24	12	2	3W wood	5200	5214	4.26	2.32	3.16	27	1620	704
20	13	3	3W wood	5600	5615	4.46	2.61	3.55	32	1920	741
24	10	2	3W wood	5900	5916	4.33	2.68	3.64	33	1980	745
24	8	2	3W wood	6600	6617	4.46	3.08	4.19	44	2640	864
22	10	2	3W wood	6900	6918	4.41	3.18	4.33	44	2640	836
22	8	2	3W wood	7200	7219	4.36	3.29	4.47	45	2700	828
20	10	2	3W wood	7250	7269	4.36	3.31	4.50	46	2760	841
20	8	2	3W wood	8850	8873	4.21	3.90	5.31	49	2940	759
18	8	2	3W wood	9800	9826	3.29	3.38	4.60	39	2340	698



ENGINE GRAPH





CONTACT

3W International GmbH
Hollerstraße 12
61350 Bad Homburg
Germany

Phone: +49 (6172) 80 89 34-0

www.3w-international.com
info@3w-international.com

PERFORMANCE BEYOND LIMITS

