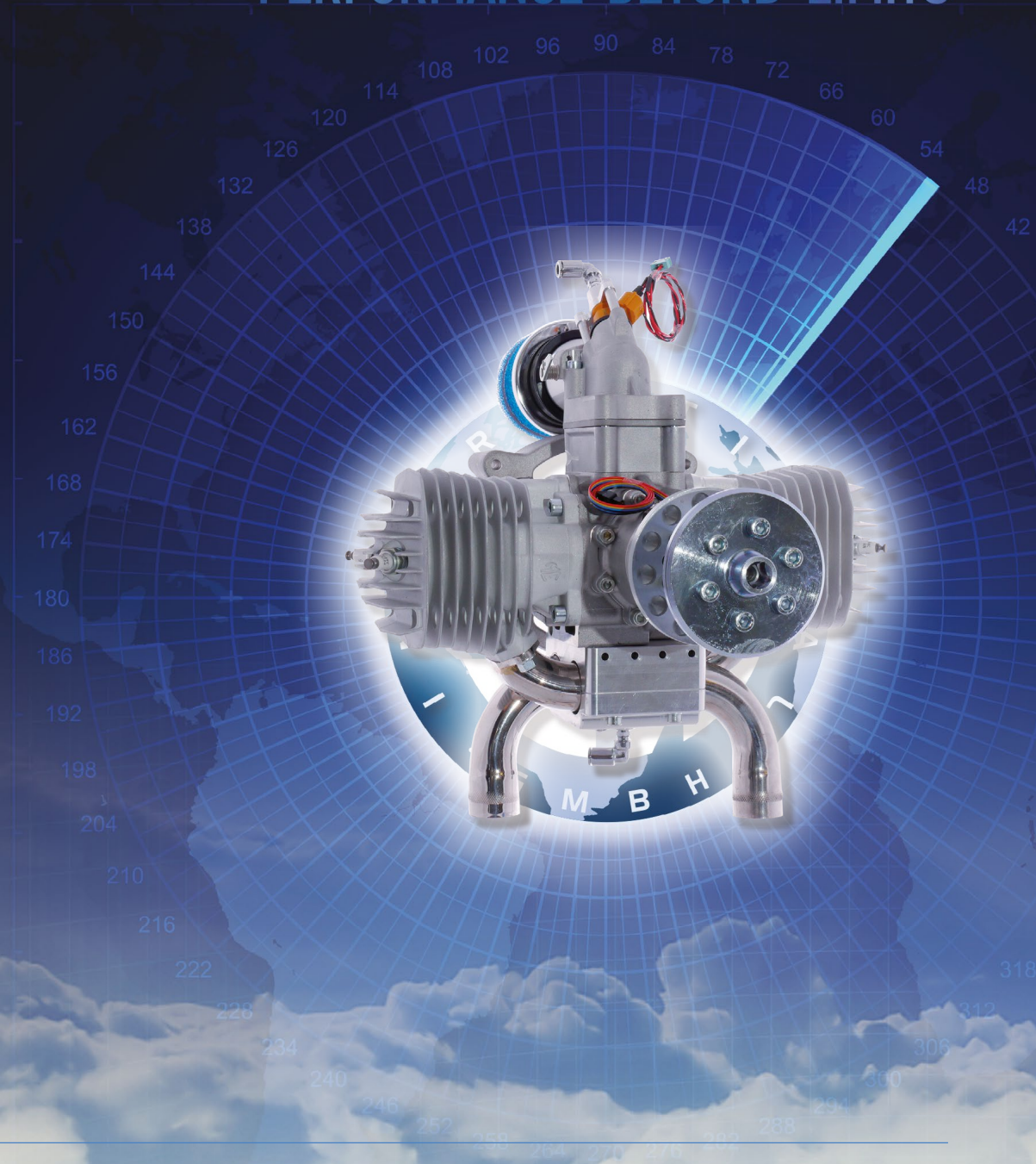




PERFORMANCE BEYOND LIMITS

ENGINE DATA

3W-210XI B2 HFE FI





ENGINE DATA 3W-210XI B2 HFE FI



SPECIFICATIONS

Cylinder Capacity	210.0 ccm/12.81 cu in
Power	14.75 HP/11.0 KW
Torque	17.9 Nm/4900 RPM
Bore Diameter	2.16 inch (55 mm)
Stroke	1.77 inch (45 mm)
Speed Range	1000-7500 RPM
Weight	16.31 lbs (7.4 kg), incl. ignition
Crankshaft	4 ball bearing
Oil/Gasoline Ratio	1:50 / 2 % mix
Operating voltage	13-28 V DC
Tested Heavy Fuel	JETA-I, JP-5, JP-8 Mix ration: 2 % Aspen Oil 0,1 % Diesel Valve Cleaner

ENGINE TYPE / SETUP

Direction	clockwise
Muffler	Stainless steel
Fuel	Jet-A1
Date	23.01.2013
Running time before test	24 hours
Header length	19 cm
Throttle position	WOT
Propeller	various

Engine data based on test run according to:

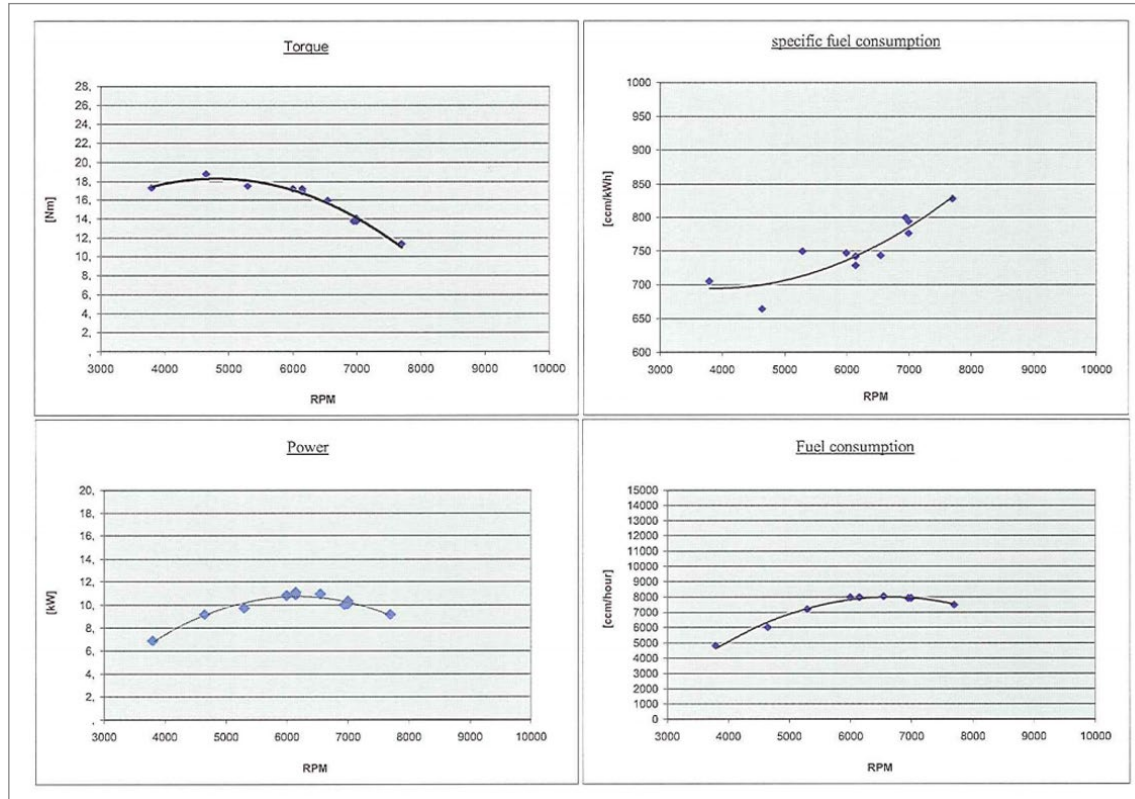
Air pressure (mbar)	992
Ambient temp. (°C)	17
Humidity (%)	32

ENGINE PARAMETERS

Propeller					n red	Md red	N red	N red	FC	FC	SFC	
Diameter	Pitch	Blades	Vendor	RPM	RPM	[Nm]	[kW]	[PS]	ccm/min	ccm/h	ccm/kWh	gr/PS/h
31	20	2	misc	3800	3813	17.29	6.88	9.35	80	4800	705	415
31	18	2	seidel	4650	4665	18.75	9.13	12.42	100	6000	664	390
32	14	3	3W cfk	5300	5318	17.5	9.71	13.21	120	7200	749	440
29	11	3	jxf	6150	6170	16.87	10.87	14.78	133	7980	742	436
30	14	2	menz s	6000	6020	17.19	10.8	14.69	133	7980	746	439
28	17	2	sensenich	6150	6170	17.19	11.07	15.05	133	7980	728	428
28	14	2	3W wood	6550	6572	15.94	10.93	14.87	134	8040	743	437
21	21	3	xoar	6950	6973	13.75	10.01	13.61	132	7920	799	470
26	12	2	3W wood	7000	7023	14.06	10.31	14.02	132	7920	776	457
27	12 TH	2	mejlzik	7000	7023	13.75	10.08	13.71	132	7920	794	467
26	3D	2	jxf	7700	7726	11.35	9.15	12.45	125	7500	828	487



ENGINE GRAPH





CONTACT

3W International GmbH
Hollerstraße 12
61350 Bad Homburg
Germany

Phone: +49 (6172) 80 89 34-0

www.3w-international.com
info@3w-international.com

PERFORMANCE BEYOND LIMITS

