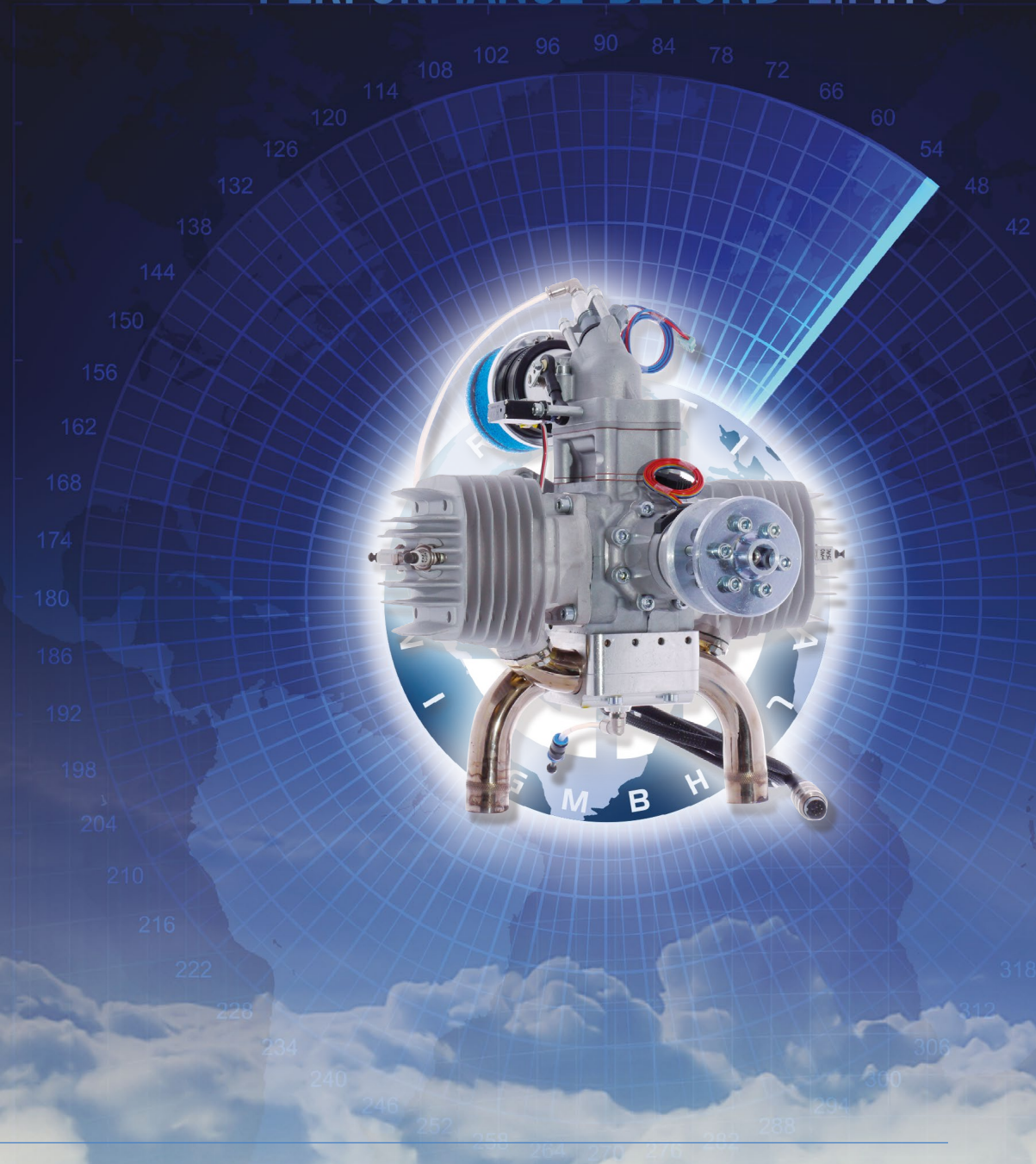




PERFORMANCE BEYOND LIMITS

ENGINE DATA

3W-170XI B2 HFE FI





ENGINE DATA 3W-170XI B2 HFE FI



SPECIFICATIONS

Cylinder Capacity	170.0 ccm/10.37 cu in
Power	12.24 HP/9.0 KW
Torque	15.3 Nm/5650 RPM
Bore Diameter	2.0 inch (51 mm)
Stroke	1.61 inch (41 mm)
Speed Range	1100-8500 RPM
Weight	13.23 lbs (6.0 kg), incl. ignition
Crankshaft	4 ball bearing
Oil/Gasoline Ratio	1:50/2% mix
Operating voltage	8-28 V DC
Tested Heavy Fuel	JETA-I, JP-5, JP-8 Mix ration: 2 % Aspen Oil 0,1 % Diesel Valve Cleaner

ENGINE TYPE / SETUP

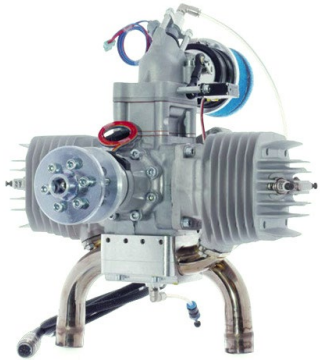
Direction	clockwise
Muffler	3W L/90K
Fuel	Jet-A1
Date	13.07.2012
Running time before test	9 hours
Header length	23 cm
Throttle position	WOT
Propeller	misc.

Engine data based on test run according to:

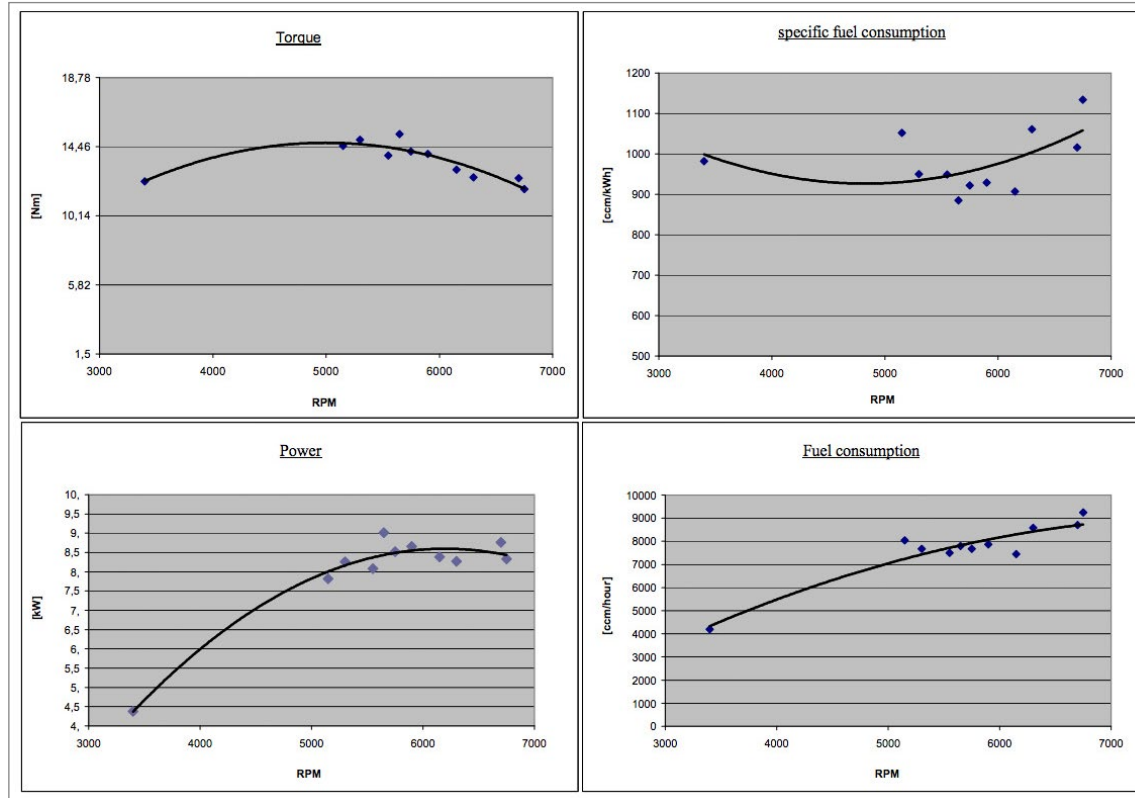
Air pressure (mbar)	995
Ambient temp. (°C)	20
Humidity (%)	63

ENGINE PARAMETERS

Propeller					n red	Md red	N red	N red	FC	FC	SFC
Diameter	Pitch	Blades	Vendor	RPM	RPM	[Nm]	[kW]	[PS]	ccm/min	ccm/h	ccm/kWh
31	18	2	misc	3400	3426	12.29	4.37	5.95	70	4200	982
32	12	2	3W wood	5150	5189	14.5	7.82	10.63	134	8040	1052
32	10	2	3W wood	5300	5340	14.89	8.26	11.24	128	7680	950
30	14	2	menz s	5550	5592	13.91	8.08	10.99	125	7500	949
31.75	14 8	2	3W cfk	5650	5692	15.23	9.01	12.26	130	7800	885
28	17	2	sesenich	5750	5793	14.15	8.52	11.59	128	7680	922
27.5	13	3	cfk fuch	5900	5944	14.01	8.65	11.77	131	7860	929
26	16	2	3W wood	6150	6196	13.02	8.39	11.41	124	7440	907
22	14	4	glasner	6300	6347	12.53	8.27	11.24	143	8580	1061
26	12	2	mejlzik	6700	6750	12.48	8.76	11.91	145	8700	1016
27	12 TH	2	mejlzik	6750	6801	11.79	8.34	11.34	154	9240	1134



ENGINE GRAPH





CONTACT

3W International GmbH
Hollerstraße 12
61350 Bad Homburg
Germany

Phone: +49 (6172) 80 89 34-0

www.3w-international.com
info@3w-international.com

PERFORMANCE BEYOND LIMITS

