



PERFORMANCE BEYOND LIMITS

ENGINE DATA

3W-157XI B2 HFE FI





ENGINE DATA 3W-157XI B2 HFE FI



SPECIFICATIONS

| | |
|--------------------|---|
| Cylinder Capacity | 157.0 ccm/9.58 cu in |
| Power | 11.56 HP/8.5 KW |
| Torque | 13.2 Nm/5500 RPM |
| Bore Diameter | 1.97 inch (50 mm) |
| Stroke | 1.6 inch (41 mm) |
| Speed Range | 1100-8500 RPM |
| Weight | 13.23 lbs (6.0 kg), incl. ignition |
| Crankshaft | 4 ball bearing |
| Oil/Gasoline Ratio | 1:50/2% mix |
| Operating voltage | 13-28 V DC |
| Tested Heavy Fuel | JETA-I, JP-5, JP-8 Mix ration: 2 % Aspen Oil 0,1 % Diesel Valve Cleaner |

ENGINE TYPE / SETUP

| | |
|--------------------------|-------------------|
| Direction | counter clockwise |
| Fuel | Jet-A1 |
| Date | 08.05.2012 |
| Running time before test | 2 hours |
| Header length | 23 cm |
| Throttle position | WOT |
| Propeller | misc. |

Engine data based on test run according to:

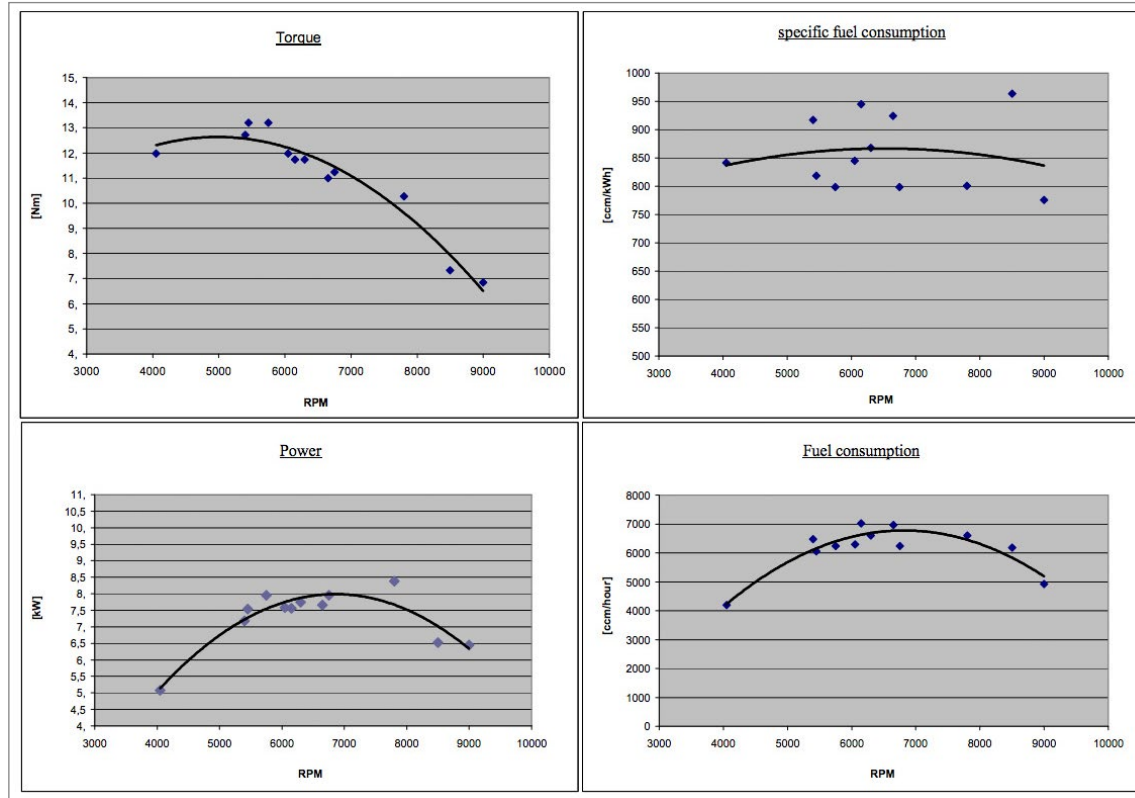
| | |
|---------------------|-----|
| Air pressure (mbar) | 997 |
| Ambient temp. (°C) | 20 |
| Humidity (%) | 47 |

ENGINE PARAMETERS

| Propeller | | | | | n red | Md red | N red | N red | FC | FC | SFC |
|-----------|-------|--------|-----------|------|-------|--------|-------|-------|---------|-------|---------|
| Diameter | Pitch | Blades | Vendor | RPM | RPM | [Nm] | [kW] | [PS] | ccm/min | ccm/h | ccm/kWh |
| 31 | 18 | 2 | seidel | 4050 | 4073 | 11.98 | 5.08 | 6.91 | 70 | 4200 | 841 |
| 29 | 11 | 3 | jxf | 5400 | 5431 | 12.71 | 7.19 | 9.77 | 108 | 6480 | 917 |
| 31.75 | 14.8 | 2 | 3W cfk | 5450 | 5481 | 13.2 | 7.53 | 10.24 | 101 | 6060 | 818 |
| 28 | 17 | 2 | sensenich | 5750 | 5783 | 13.2 | 7.95 | 10.81 | 104 | 6240 | 799 |
| 26 | 16 | 2 | 3W wood | 6050 | 6085 | 11.98 | 7.59 | 10.32 | 105 | 6300 | 845 |
| 28 | 14 | 2 | 3W wood | 6150 | 6185 | 11.73 | 7.56 | 10.28 | 117 | 7020 | 945 |
| 28 | 12 | 2 | 3W wood | 6300 | 6336 | 11.73 | 7.74 | 10.53 | 110 | 6600 | 868 |
| 26 | 12 | 2 | 3W wood | 6650 | 6688 | 11.0 | 7.66 | 10.42 | 116 | 6960 | 924 |
| 27 | 12TH | 2 | mezlik | 6750 | 6789 | 11.24 | 7.95 | 10.81 | 104 | 6240 | 799 |
| 24 | 12 | 2 | 3W wood | 7800 | 7845 | 10.27 | 8.38 | 11.4 | 110 | 6600 | 801 |
| 24 | 8 | 2 | 3W wood | 8500 | 8549 | 7.33 | 6.53 | 8.88 | 103 | 6180 | 963 |
| 22 | 8 | 2 | 3W wood | 9000 | 9052 | 6.8 | 6.45 | 8.77 | 82 | 4920 | 776 |



ENGINE GRAPH





CONTACT

3W International GmbH
Hollerstraße 12
61350 Bad Homburg
Germany

Phone: +49 (6172) 80 89 34-0

www.3w-international.com
info@3w-international.com

PERFORMANCE BEYOND LIMITS

