



PERFORMANCE BEYOND LIMITS

ENGINE DATA

3W-110XI B2 HFE FI





ENGINE DATA 3W-110XI B2 HFE FI



SPECIFICATIONS

Cylinder Capacity	110.0 ccm/6.7 cu in
Power	7.1 HP/5.3 KW
Torque	8.4 Nm/5900 RPM
Bore Diameter	1.77 inch (45 mm)
Stroke	1.37 inch (35 mm)
Speed Range	1200-8500 RPM
Weight	10.8 lbs (4.9 kg), incl. ignition
Crankshaft	4 ball bearing
Oil/Gasoline Ratio	1:50/2% mix
Operating voltage	13-28 V DC
Tested Heavy Fuel	JETA-I, JP-5, JP-8 Mix ration: 2 % Aspen Oil 0,1 % Diesel Valve Cleaner

ENGINE TYPE / SETUP

Direction	clockwise
Muffler	---
Fuel	Jet-A1
Date	28.06.2012
Running time before test	6 hours
Header length	22 cm
Throttle position	WOT
Propeller	misc.

Engine data based on test run according to:

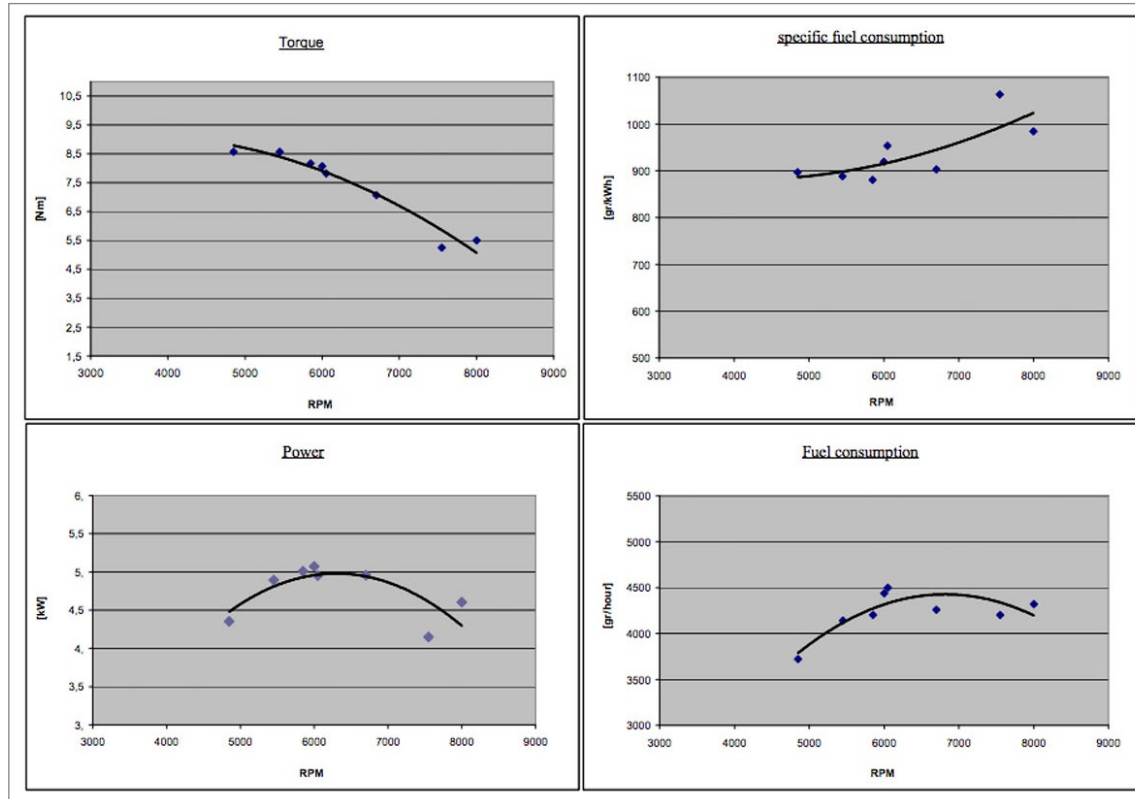
Air pressure (mbar)	991
Ambient temp. (°C)	28
Humidity (%)	44

ENGINE PARAMETERS

Propeller					n red	Md red	N red	N red	FC	FC	SFC
Diameter	Pitch	Blades	Vendor	RPM	RPM	[Nm]	[kW]	[PS]	ccm/min	ccm/h	ccm/kWh
30	12	2	3W wood	4850	4928	8.58	4.36	5.92	62	3720	897
28	14	2	3W wood	5450	5538	8.58	4.89	6.66	69	4140	888
26	12	2	3W wood	5850	4944	8.17	5.01	6.81	70	4200	881
28	10	2	3W wood	6000	6097	8.07	5.07	6.9	74	4440	919
27	12 TH	2	mejlzik	6050	6148	7.82	4.95	6.74	75	4500	954
26	3D	2	jxf	6700	6808	7.06	4.95	6.74	71	4260	903
24	8	2	3W wood	7550	7672	5.25	4.15	5.64	70	4200	1063
22	10	2	3W wood	8000	8129	5.5	4.61	6.26	72	4320	985



ENGINE GRAPH





CONTACT

3W International GmbH
Hollerstraße 12
61350 Bad Homburg
Germany

Phone: +49 (6172) 80 89 34-0

www.3w-international.com
info@3w-international.com

PERFORMANCE BEYOND LIMITS

