



PERFORMANCE BEYOND LIMITS

ENGINE DATA 3W-28i HFE FI





ENGINE DATA 3W-28i HFE FI



SPECIFICATIONS

Cylinder Capacity	28.0 ccm/1.74 cu in
Power	3.12 HP/2.29 KW
Torque	2.58 Nm/8500 RPM
Bore Diameter	1.42 inch (36 mm)
Stroke	1.1 inch (28 mm)
Speed Range	1500-8600 RPM
Weight	4.41 lbs (2.0 kg), incl. ignition
Crankshaft	3 ball bearing
Oil/Gasoline Ratio	1:50/2% mix
Operating voltage	13-28 V DC
Tested Heavy Fuel	JETA-I, JP-5, JP-8 Mix ration: 2 % Aspen Oil 0,1 % Diesel Valve Cleaner

ENGINE TYPE / SETUP

Engine	3W 28i HFE FI
Serial No.	13411079B
Direction	tractor
Muffler	3W banana shape
Fuel	Jet-A1
Date	22.05.2013
Running time before test	6 hours
Throttle position	variable
Propeller	3W 18x8 wood

Engine data based on test run according to:

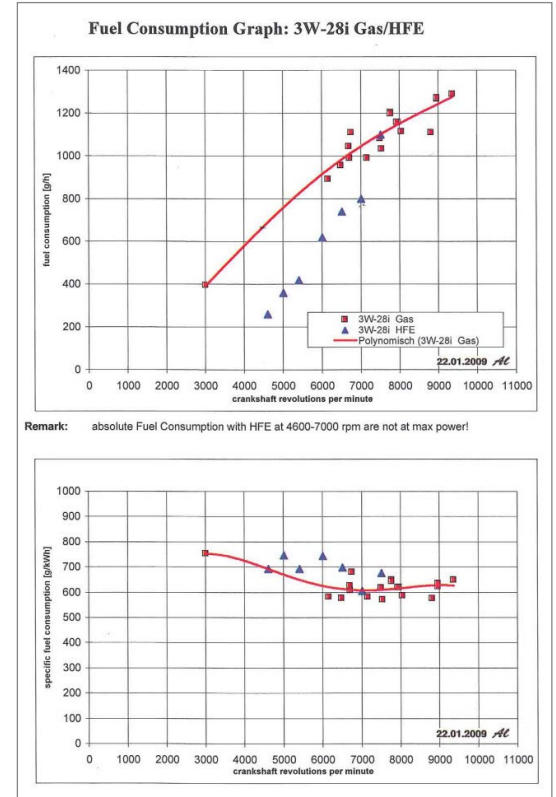
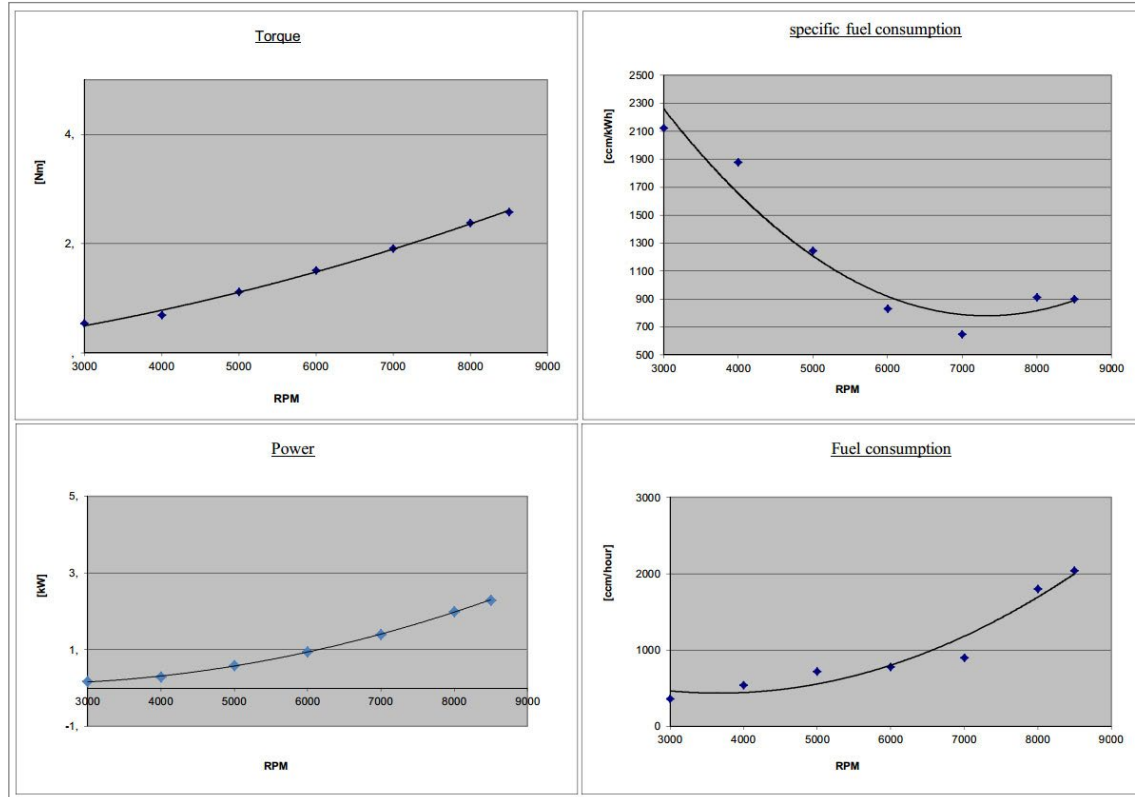
Air pressure (mbar)	993
Ambient temp. (°C)	16
Humidity (%)	65

ENGINE PARAMETERS

Propeller					n red	Md red	N red	N red	FC	FC	SFC	
Diameter	Pitch	Blades	Vendor	RPM	RPM	[Nm]	[kW]	[PS]	ccm/min	ccm/h	ccm/kWh	gr/PS/h
18	8	2	3W	3000	3011	0.55	0.17	0.23	6	360	2125	1250
				4000	4015	0.69	0.29	0.4	9	540	1878	1105
				5000	5019	1.12	0.58	0.79	12	720	1247	733
				6000	6022	1.51	0.95	1.29	13	780	830	488
				7000	7026	1.91	1.4	1.9	15	900	650	383
				8000	8030	2.38	1.99	2.71	30	1800	913	537
				8500	8532	2.58	2.29	3.12	34	2040	899	529



ENGINE GRAPH





CONTACT

3W International GmbH
Hollerstraße 12
61350 Bad Homburg
Germany

Phone: +49 (6172) 80 89 34-0

www.3w-international.com
info@3w-international.com

PERFORMANCE BEYOND LIMITS

