



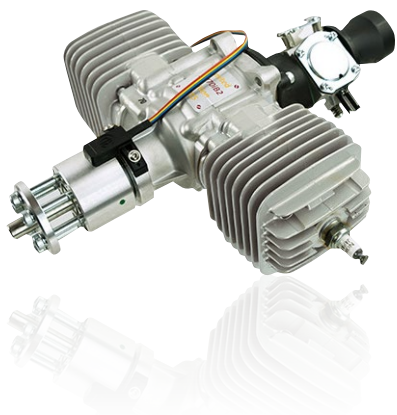
PERFORMANCE BEYOND LIMITS

ENGINE DATA 3W-70IB2





ENGINE DATA 3W-70IB2



SPECIFICATIONS

Cylinder Capacity	68 ccm / 4.12 cu in
Power	6.51 HP / 4.78 KW
Bore Diameter	1.5 inch (38.00 mm)
Stroke	1.18 inch (30.00 mm)
Speed Range	1200 - 8500 RPM
Weight	4.2 lbs (2.0 kg) incl. ignition
Crankshaft	3 ball bearing
Oil/Gasoline Ratio	1:50 / 2% mix
Operating voltage	6 - 8.4 V DC
Torque	6.57 Nm / 6950 RPM
kW/RPM	4.78 KW / 6950 RPM

ENGINE TYPE / SETUP

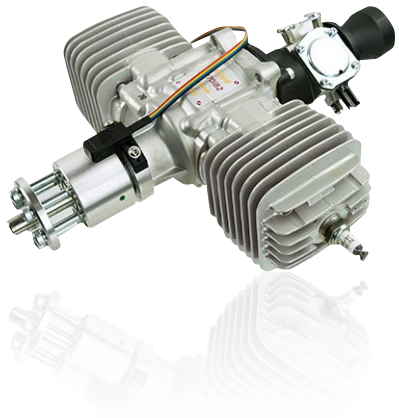
Engine	3W-70iB2i
Serial No.	
Direction	clockwise
Muffler	M/55 S
Fuel	Aspen 2T
Date	06.02.2013
Running time before test	9 hours
Throttle position	WOT
Propeller	various

Engine data based on test run according to:

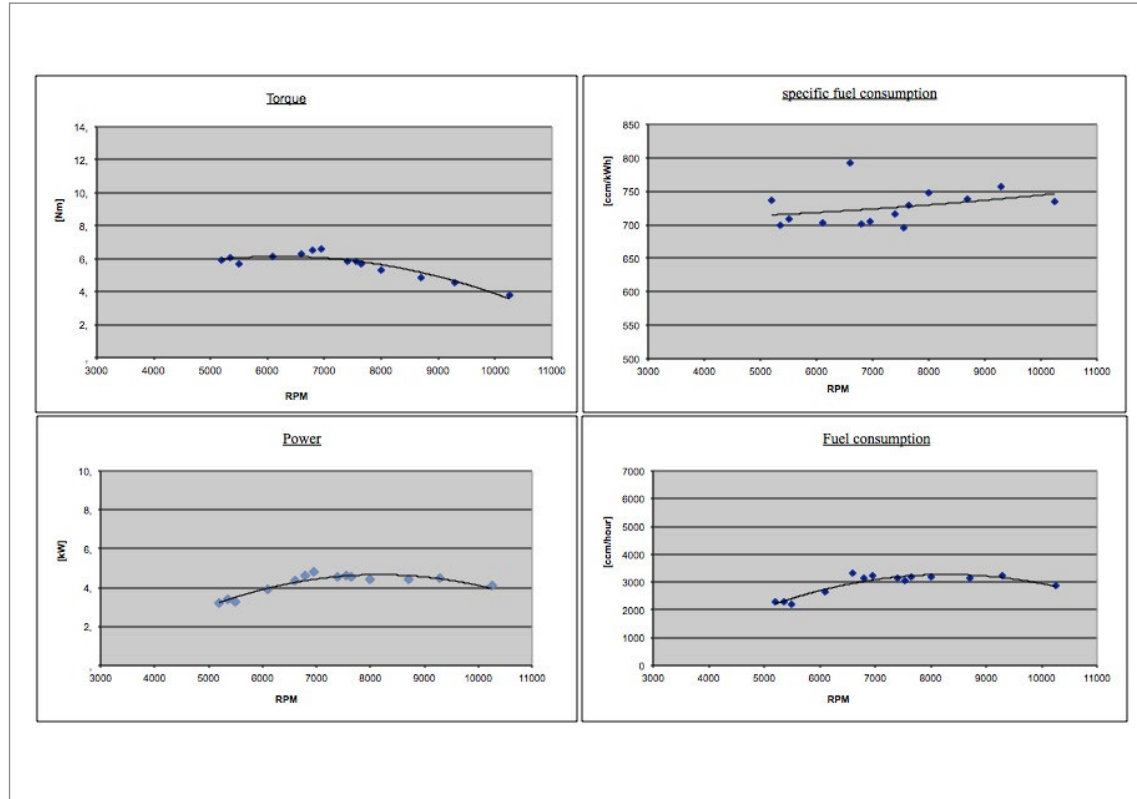
Air pressure (mbar)	974
Ambient temp. (°C)	21
Humidity (%)	32

ENGINE PARAMETERS

Propeller					n red	Md red	N red	N red	FC	FC	SFC	
Diameter	Pitch	Blades	Vendor	RPM	RPM	[Nm]	[kW]	[PS]	ccm/min	ccm/h	ccm/kWh	gr/PS/h
24	16	2	menz s	5200	5270	5.93	3.23	4.39	38	2280	736	433
28	10	2	mejzlik	5300	5422	6.1	3.39	4.61	38	2280	700	412
26	10	2	menz s	5500	5574	5.67	3.27	4.44	37	2220	708	416
24	12	2	menz s	6100	6182	6.12	3.91	5.32	44	2640	703	414
24	10	2	menz s	6600	6689	6.28	4.34	5.91	55	3300	791	466
24	10	2	3w holz	6800	6892	6.51	4.63	6.3	52	3120	701	412
24	10	2	menz s	6950	7044	6.57	4.78	6.51	54	3240	705	415
24	8	2	3w holz	7400	7500	5.86	4.54	6.18	52	3120	715	421
22	10	2	3w holz	7550	7652	5.8	4.58	6.24	51	3060	695	409
23	8	2	falcon CFK	7650	7753	5.67	4.54	6.18	53	3180	729	429
20	10	2	3w holz	8000	8108	5.28	4.43	6.02	53	3180	748	440
18	10	2	3w holz	8700	8817	4.83	4.4	5.99	52	3120	738	434
20	8	2	3w holz	9300	9425	4.58	4.46	6.06	54	3240	757	445
18	8	2	3w holz	10250	10388	3.8	4.08	5.55	48	2880	735	432



ENGINE GRAPH





CONTACT

3W International GmbH
Hollerstraße 12
61350 Bad Homburg
Germany

Phone: +49 (6172) 80 89 34-0

www.3w-international.com
info@3w-international.com

PERFORMANCE BEYOND LIMITS

