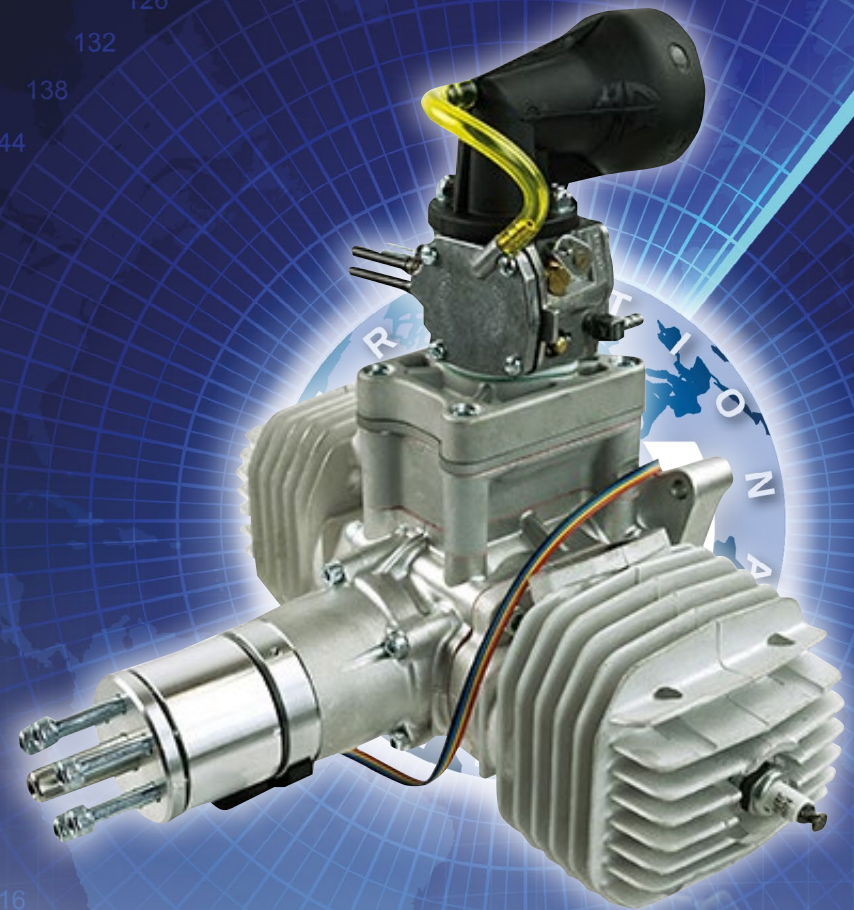




PERFORMANCE BEYOND LIMITS

ENGINE DATA 3W-110IB2





SPECIFICATIONS

Cylinder Capacity	110 ccm / 6.7 cu in
Power	11.12 HP / 8.17 KW
Bore Diameter	1.77 inch (45.00 mm)
Stroke	1.37 inch (35.00 mm)
Speed Range	1200 - 8500 RPM
Weight	6.72 lbs (3.1 kg) incl. ignition
Crankshaft	3 ball bearing
Oil/Gasoline Ratio	1:50 / 2% mix
Operating voltage	6 - 8.4 V DC
Torque	12.54 Nm / 5400 RPM
kW/RPM	8.17 KW / 7850 RPM

ENGINE PARAMETERS

Propeller					n red	Md red	N red	N red	FC	FC	SFC	
Diameter	Pitch	Blades	Vendor	RPM	RPM	[Nm]	[kW]	[PS]	ccm/min	ccm/h	ccm/kWh	gr/PS/h
20	10	2	3w holz	9150	9144	7.41	7.1	9.66	80	4800	675	397
23	8W	2	falcon CFK	8950	8944	8.27	7.75	10.55	87	5220	672	395
22	10	2	3w holz	8820	8814	8.46	7.81	10.63	88	5280	674	397
24	8	2	3w holz	8760	8754	8.77	8.04	10.94	93	5580	692	407
24	10	2	3w holz	7960	7954	9.79	8.16	11.09	105	6300	771	453
24	10	2	menz s	7850	7844	9.94	8.17	11.11	98	5880	718	422
24	10	2	menz s	8000	7994	9.76	8.17	11.12	105	6300	769	452
24	12	2	menz s	7450	7445	10.19	7.95	10.81	103	6180	776	456
26	10	2	menz s	6920	6915	11.05	8.01	10.89	107	6420	800	471
28	10	2	mejzlik	6900	6895	11.11	8.03	10.92	105	6300	783	460
28	10	2	mejzlik	6850	6845	10.62	7.62	10.36	106	6360	833	490
24	16	2	menz s	6800	6795	11.11	7.91	10.76	99	5940	749	441
28	12	2	3w holz	6270	6266	11.3	7.42	10.09	95	5700	767	451
28	12	2	3w holz	6350	6346	11.61	7.72	10.5	98	5880	760	447
30	12	2	3w holz	5400	5396	12.54	7.09	9.64	76	4560	642	378
32	12	2	3w holz	5000	4996	11.7	6.14	8.35	74	4440	721	424

ENGINE TYPE / SETUP

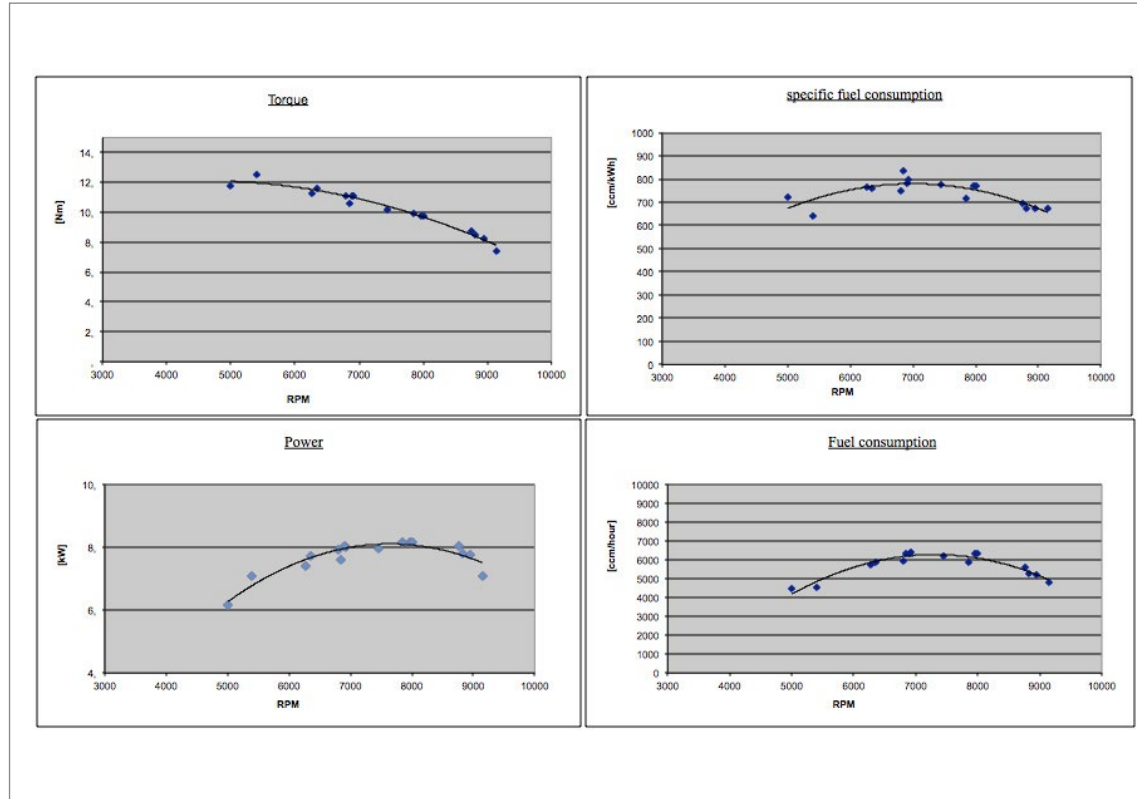
Engine	3W-110iB2
Serial No.	test
Direction	clockwise
Muffler	3w L/70
Fuel	Aspen 2T
Date	08.02.2013
Running time before test	4,5 hours
Throttle position	WOT
Propeller	various

Engine data based on test run according to:

Air pressure (mbar)	1005
Ambient temp. (°C)	18
Humidity (%)	20



ENGINE GRAPH





CONTACT

3W International GmbH
Hollerstraße 12
61350 Bad Homburg
Germany

Phone: +49 (6172) 80 89 34-0

www.3w-international.com
info@3w-international.com

PERFORMANCE BEYOND LIMITS

